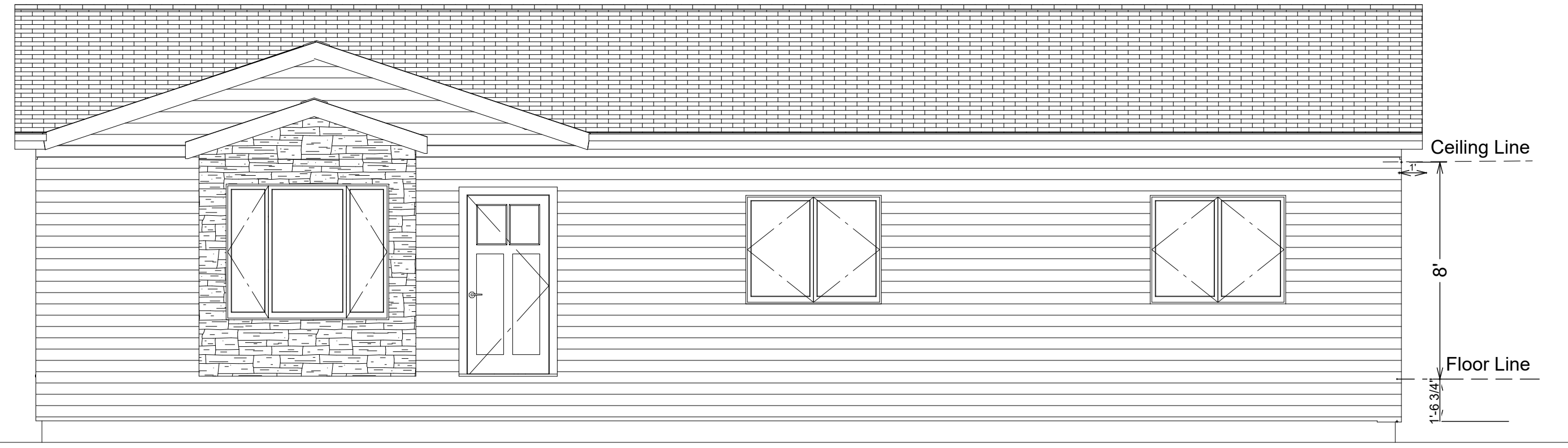
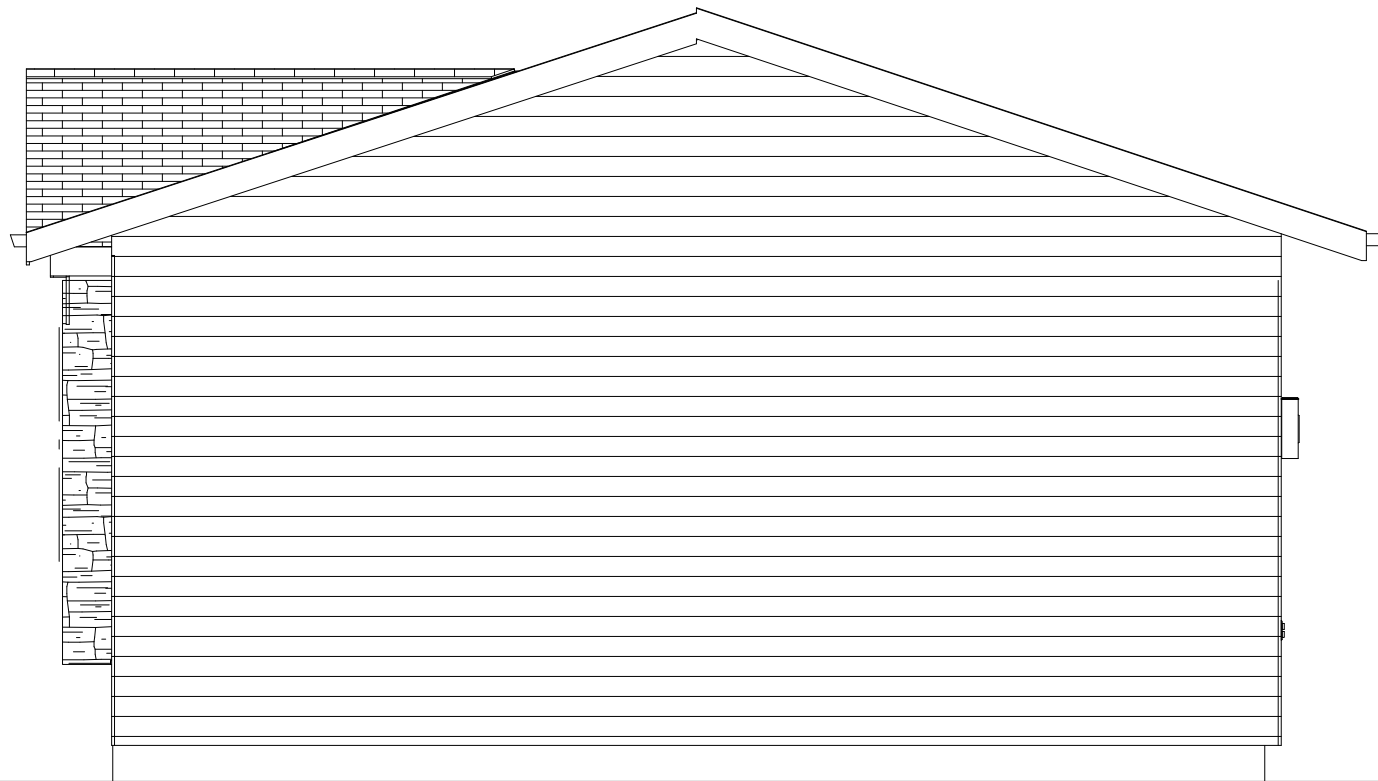


12"  
4"



Front Elevation 1/4"=1'

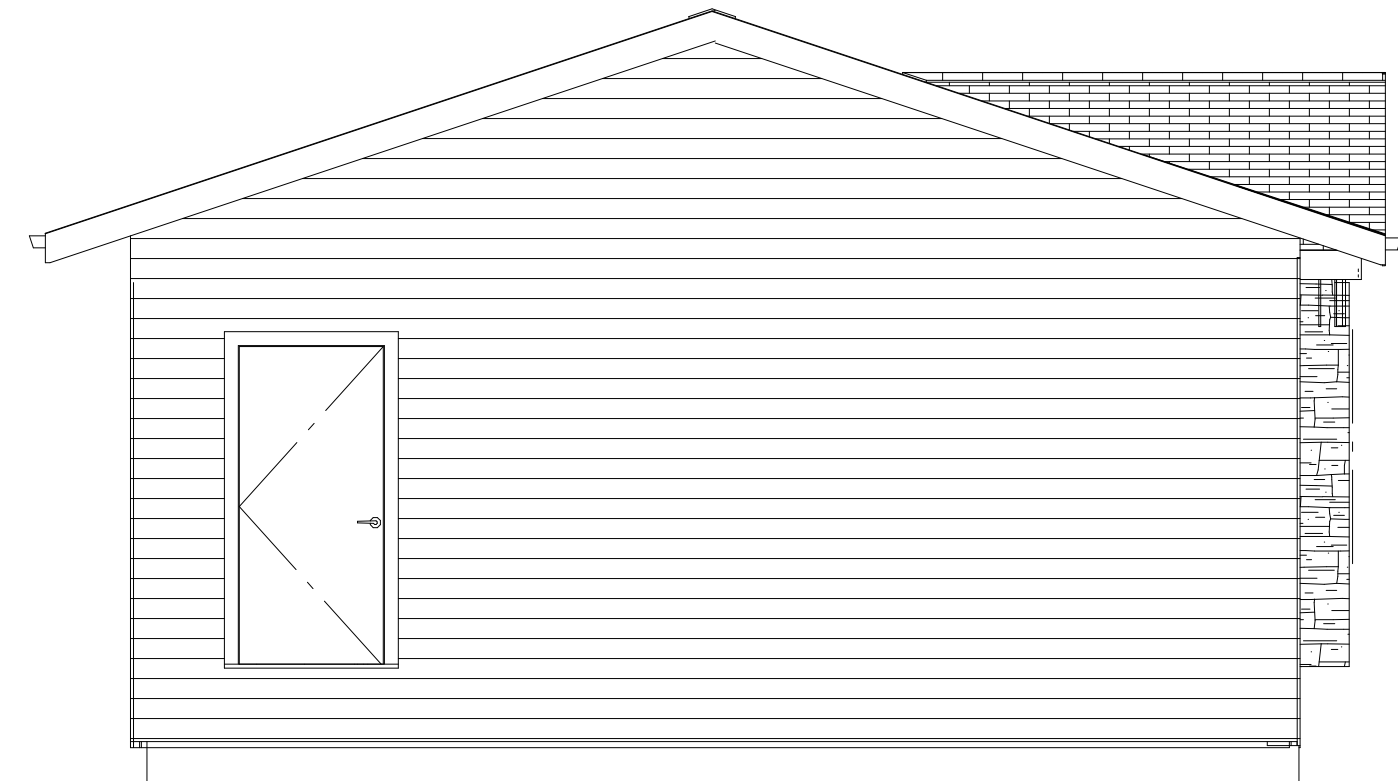
Governor's House 3-Bedroom  
Door Left (reverse)



Right Elevation 1/4"=1'

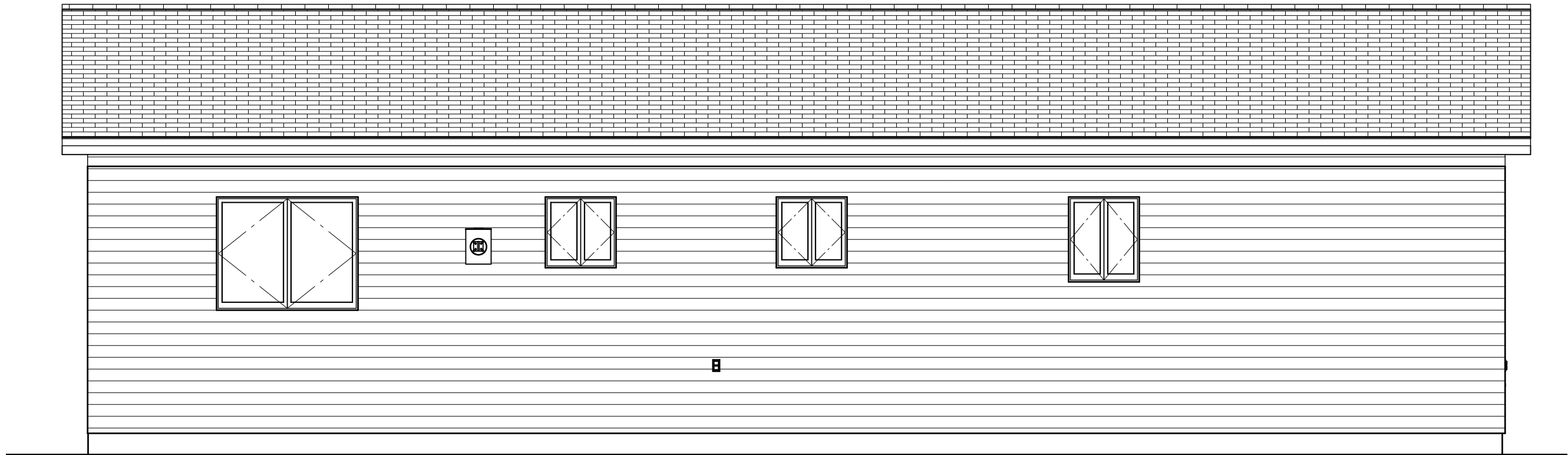
Door Schedule			
Type	Size	R.O. Size	Style
A	3'-0"x6'8"	38 1/2"x82 1/2"	Ins. Steel w/ Lite
B	3'-0"x6'8"	38 1/2"x82 1/2"	Ins Steel
C	2'-0"x6'8"	26"x82 1/2"	Wood Passage
D	3'-0"x6'8"	38 1/2"x82 1/2"	Wood Passage
E	4'-0"x6'8"	50 1/2"x82 1/2"	Wood Bifold
F	2'-6"x6'8"	32"x82 1/2"	Wood Passage
G	5'-0"x6'8"	62 1/2"x82 1/2"	Wood Bifold

Window Schedule		
Type	R.O Size	Style
A	60"x48"	Casement
B	30"x36"	Casement
C	30"x30"	Casement
D	72"x60"	Triple Casement

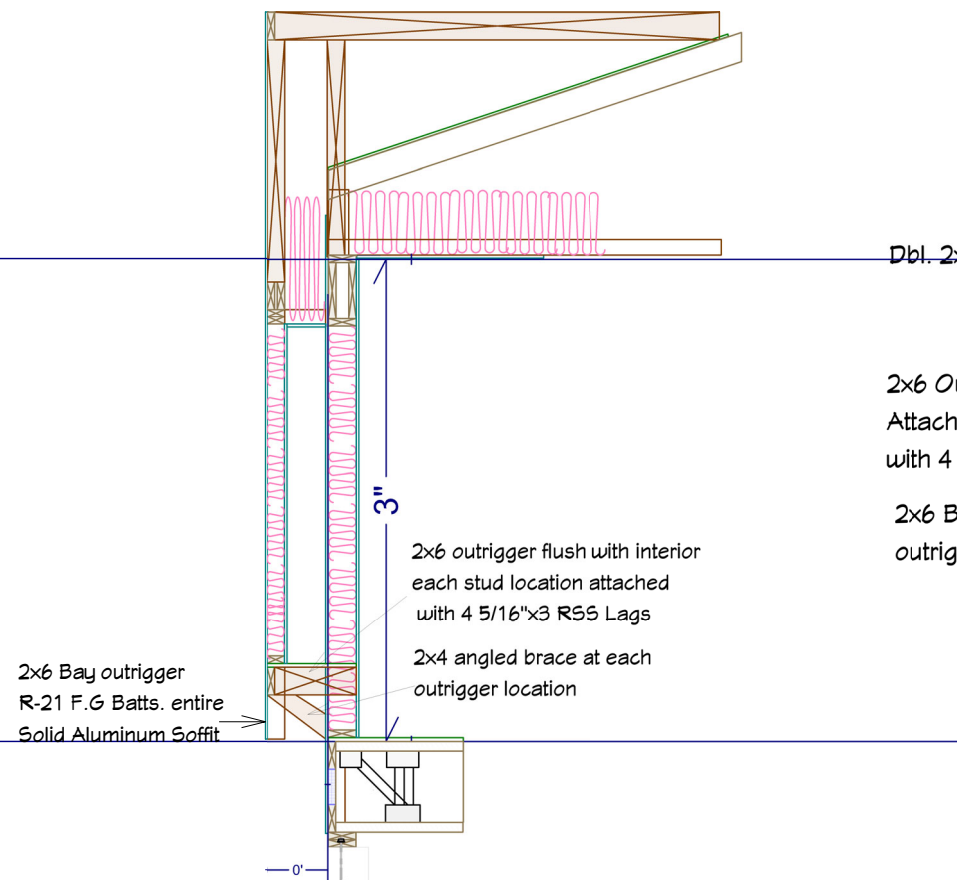


Left Elevation 1/4"=1'

Governor's House 3-Bedroom  
Door Left (reverse)

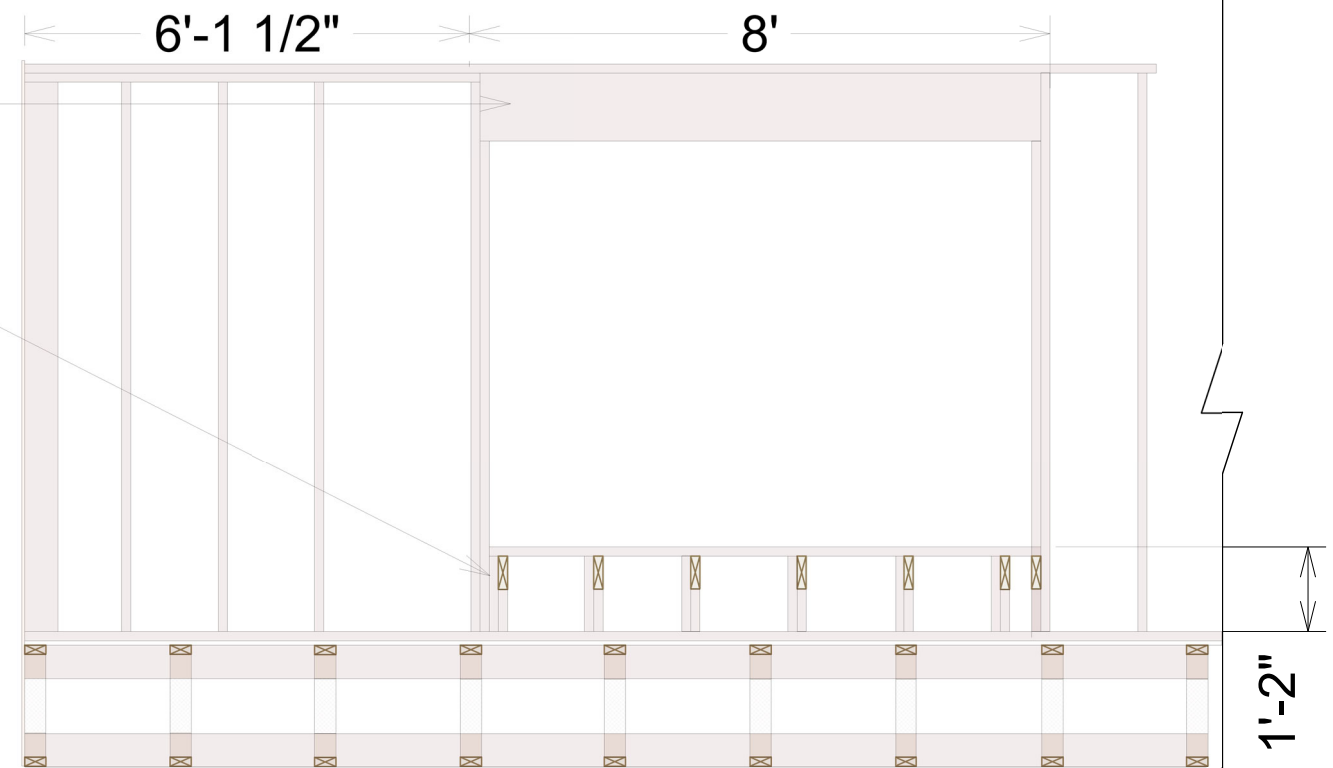


Rear Elevation 1/4"=1'

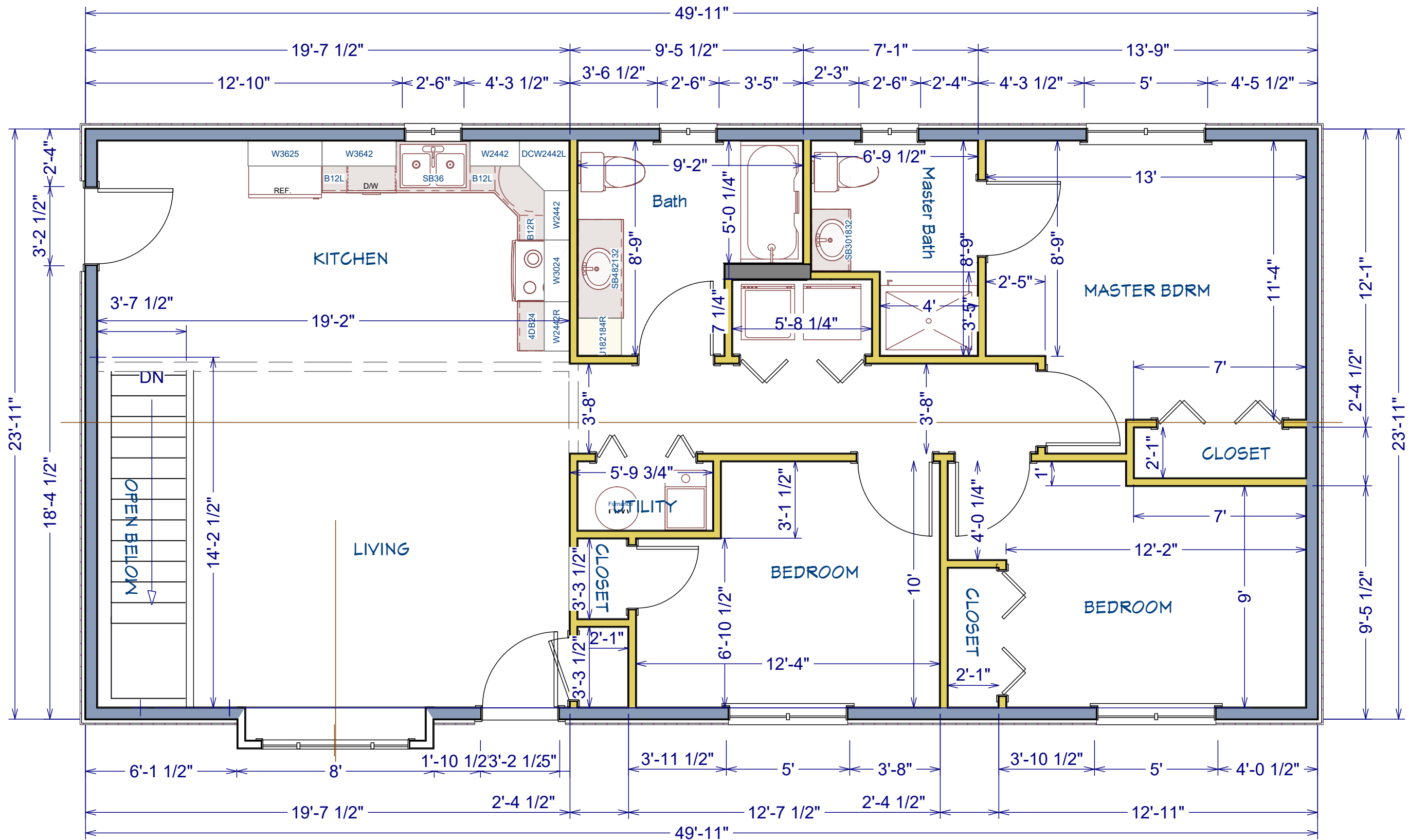


Box Bay Section

Governor's House 3-Bedroom  
Door Left (reverse)



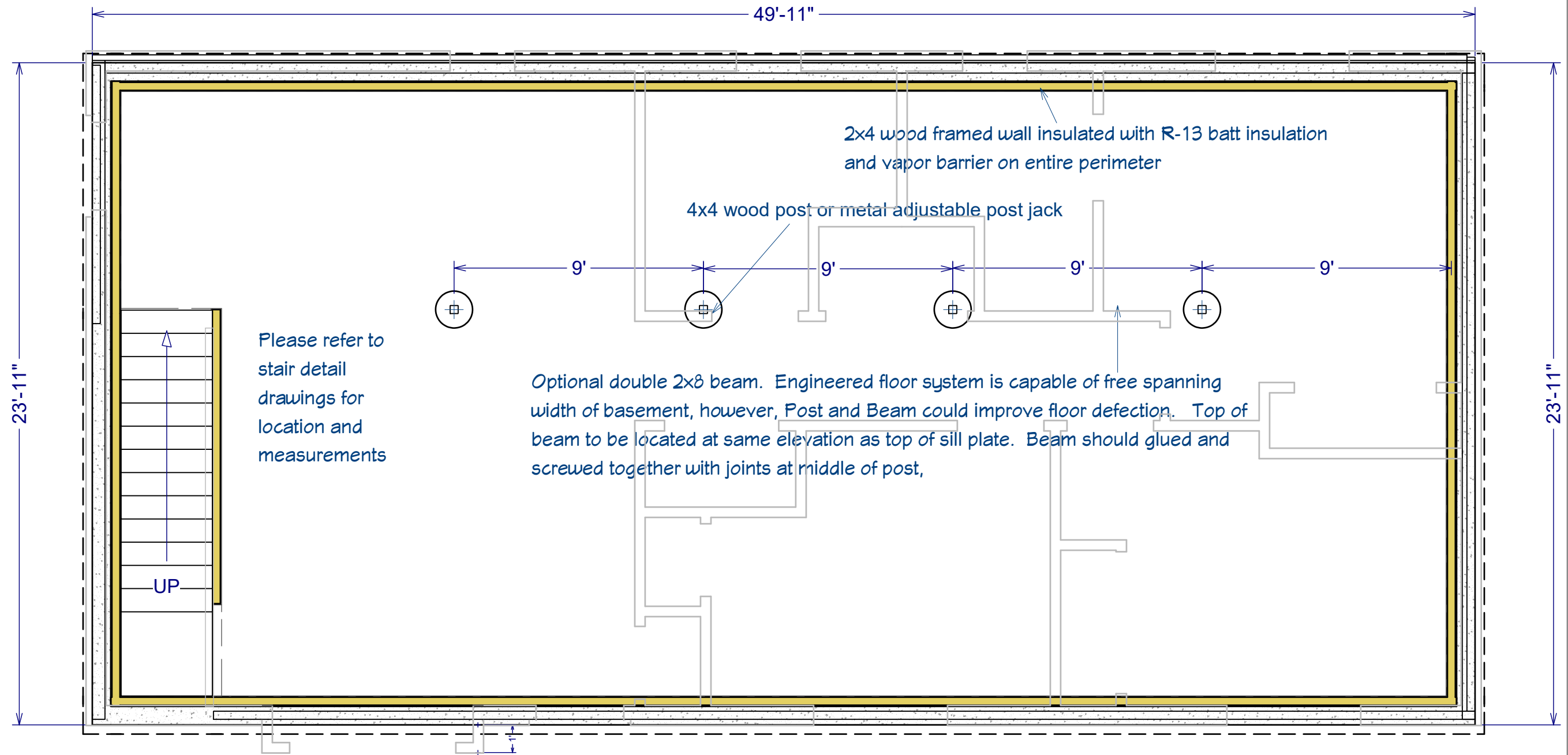
Box Bay Opening



**Governor's House 3-Bedroom  
Door Left (reverse)**

**Main Floor**

Dimensions are Framing Dimensions  
Please verify surface dimensions 1/4" = 1'



### Foundation Plan

Governor's House 3-Bedroom  
Door Left (reverse)