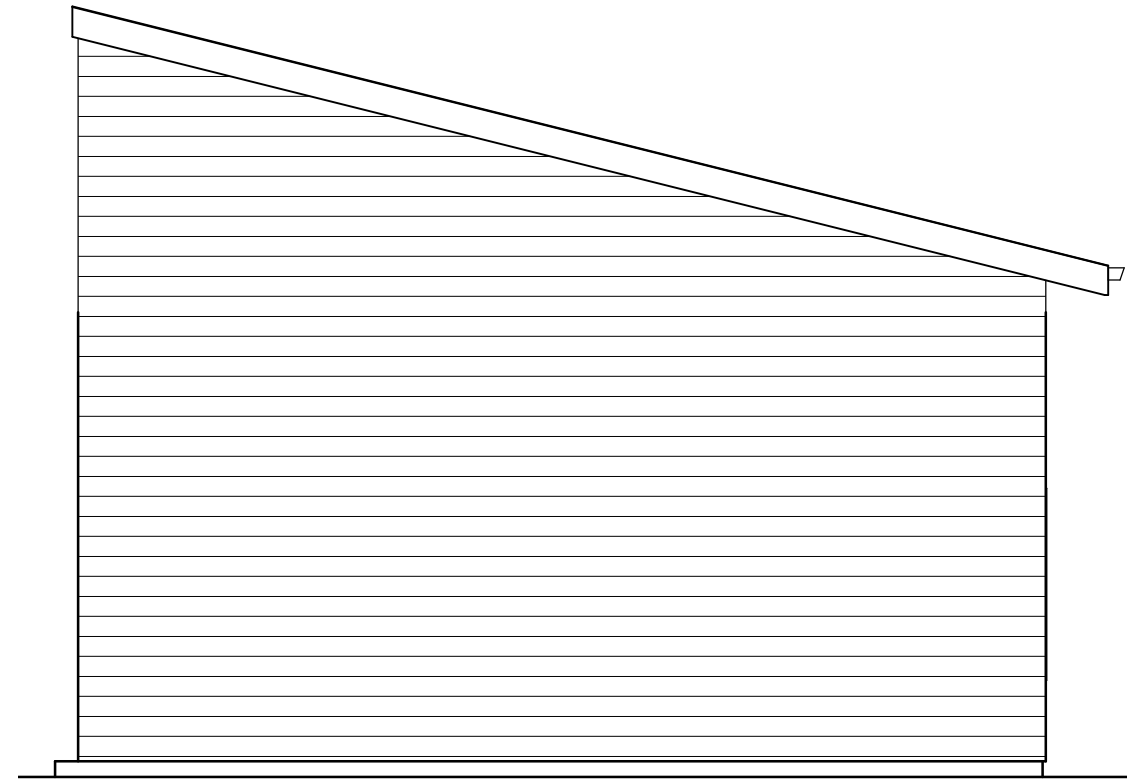




Front Elevation 1/4"=1'



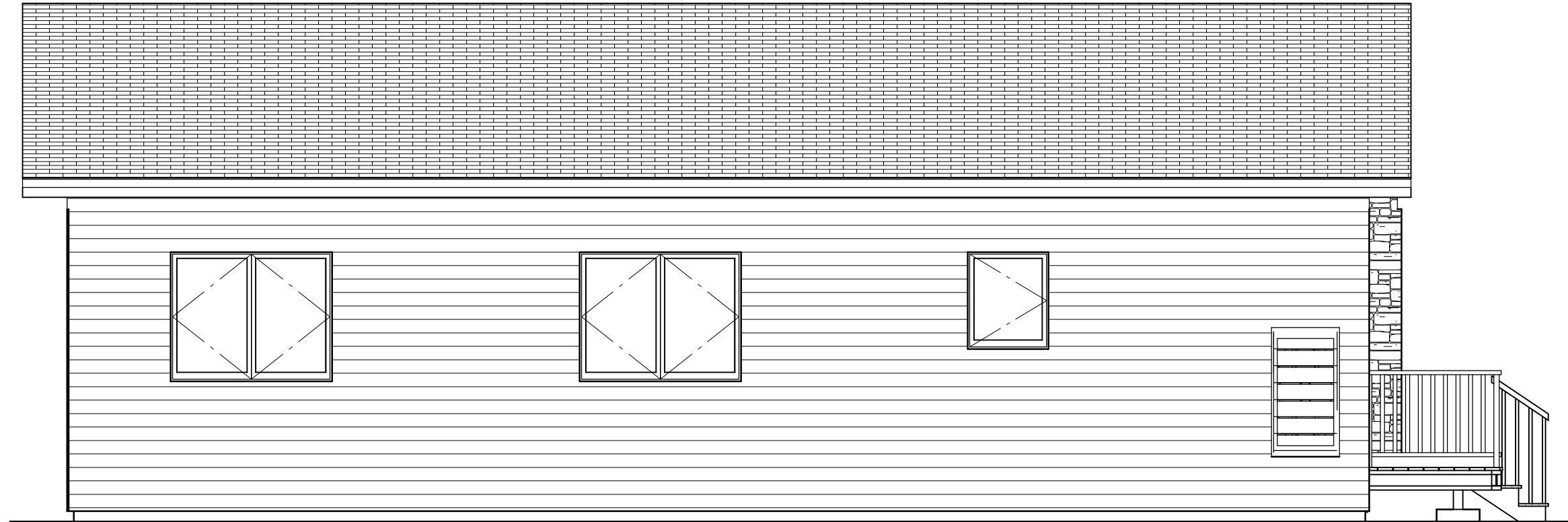
Rear Elevation 1/4"=1'

DakotaPlex
2-Bedroom LH

DakotaPlex2-Bedroom LH

DESIGN BY:
Mike Harsma

5/4/2021

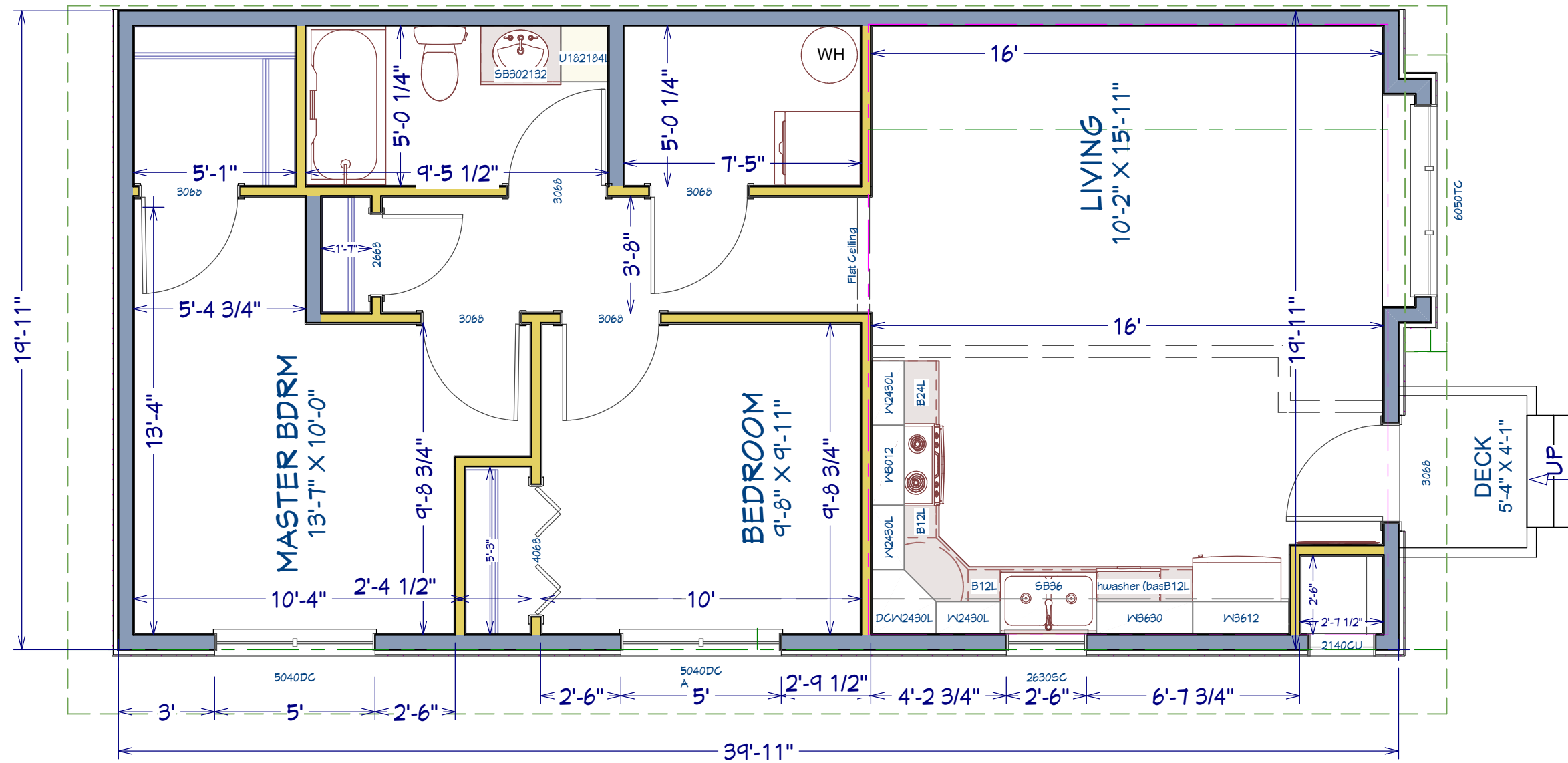


Left Elevation 1/4"=1'

Window Schedule		
Type	R.O Size	Style
A	60"x48"	Casement
B	30"x36"	Casement
C	72"x60"	Triple Casement

Door Schedule			
Type	Size	R.O. Size	Style
A	3'-0"x6'8"	38 1/2"x82 1/2"	Ins. Steel w/ Lite
B	3'0"x6'8"	38 1/2"x82 1/2"	Wood Passage
C	4'0"x6'8"	50 1/2"x82 1/2"	Wood Bifold
D	2'6"X6'8"	32 1/2"X82 1/2"	Wood Passage

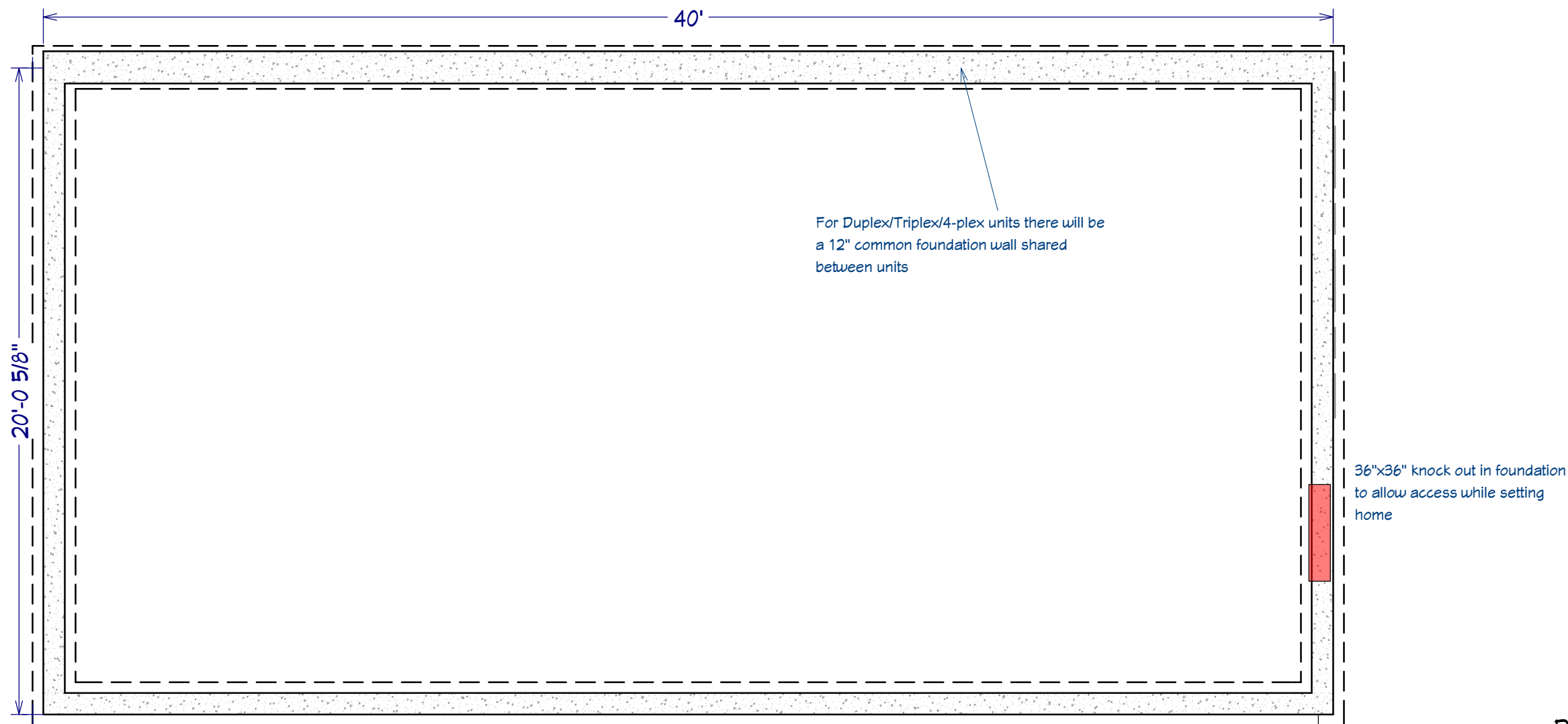
DakotaPlex
2-Bedroom LH



Main Floor

DakotaPlex
2-Bedroom LH

Dimensions are Framing Dimension. Verify surface dimension upon ordering 1/4" = 1'



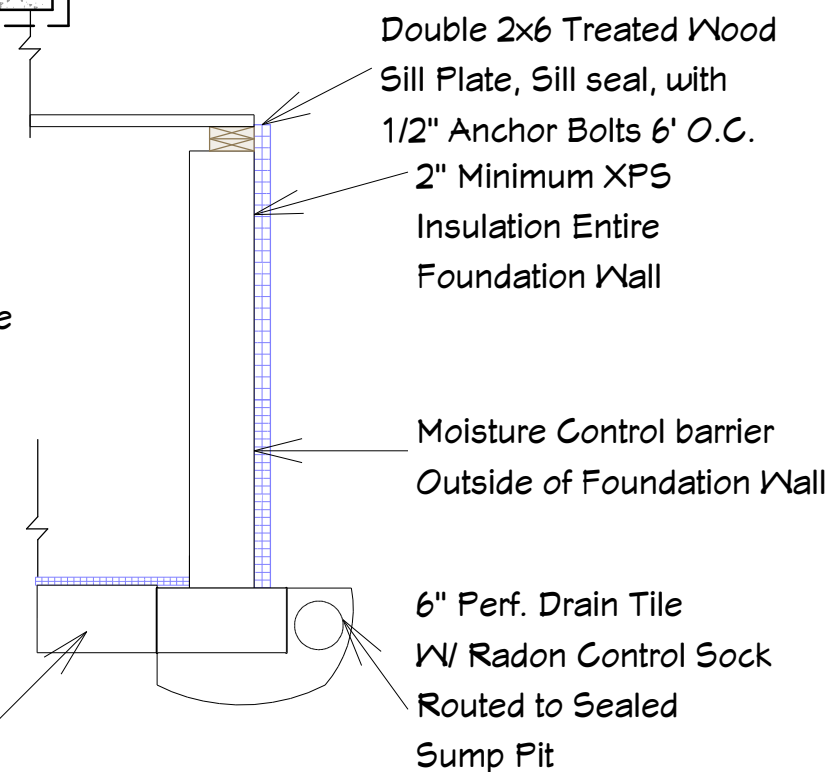
Crawlspace lay-out

Note: Insulated and sealed crawlspaces should NOT have added ventilation but should be treated as a conditioned area. Supply air = to 1CFM per 50CFT of volume should be routed from the existing main floor duct system through the main floor Heat Recovery Ventilator

General Notes:

These Plans are meant to be a guide for foundation construction only. Because local codes and conditions vary widely across the state, owner/contractor should consult with local code officials and verify soil conditions prior to beginning work. Wall dimensions, blocking locations, reinforcement type and footing details could change substantially from location to location.

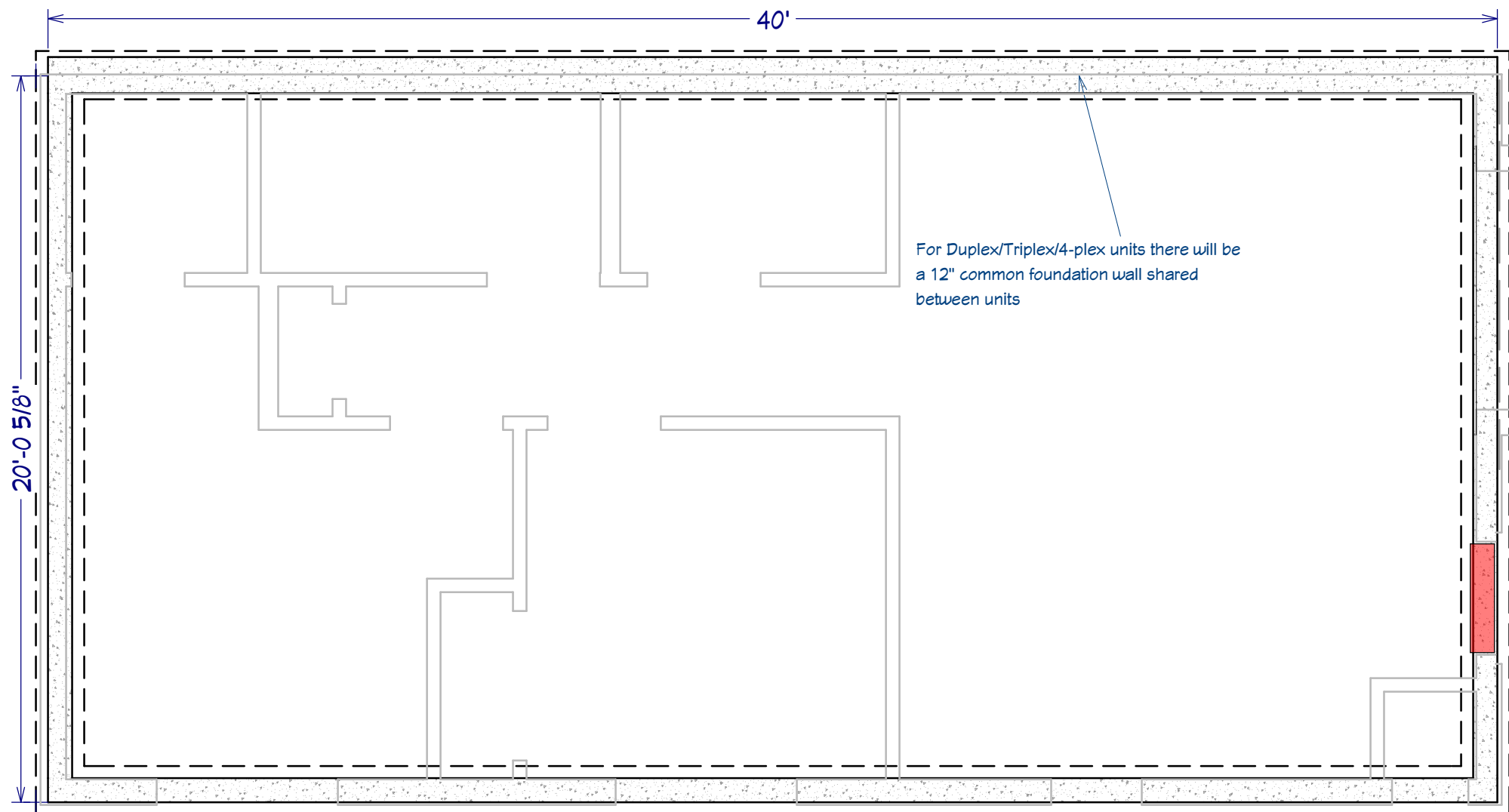
DakotaPlex
2-Bedroom LH



6mil Poly Vapor Barrier Entire Crawlspace Floor
Min. 1" XPS Insulation
4' Entire Perimeter

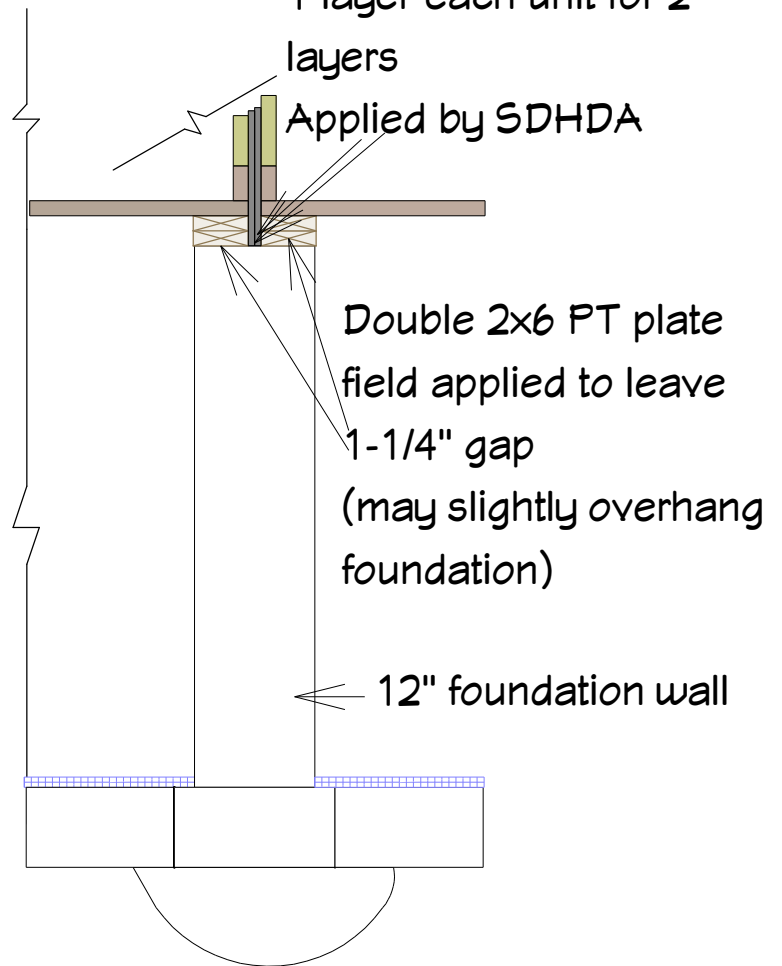
6" Gravel Base Course

Crawlspace Wall detail



36"x36" knock out in foundation to allow access while setting home

5x8 Type X Gypsum sheathing
1 layer each unit for 2 layers
Applied by SDHDA



General Notes:

These Plans are meant to be a guide for foundation construction only. Because local codes and conditions vary widely across the state, owner/contractor should consult with local code officials and verify soil conditions prior to beginning work. Wall dimensions, blocking locations, reinforcement type and footing details could change substantially from location to location.

Note:

The DakotaPlex is designed to be placed on an insulated and sealed basement. It should be treated as a conditioned area. Supply air = to 1CFM per 50 CFT of volume should be routed to the area

**DakotaPlex
2-Bedroom LH**

DakotaPlex Common Foundation Wall